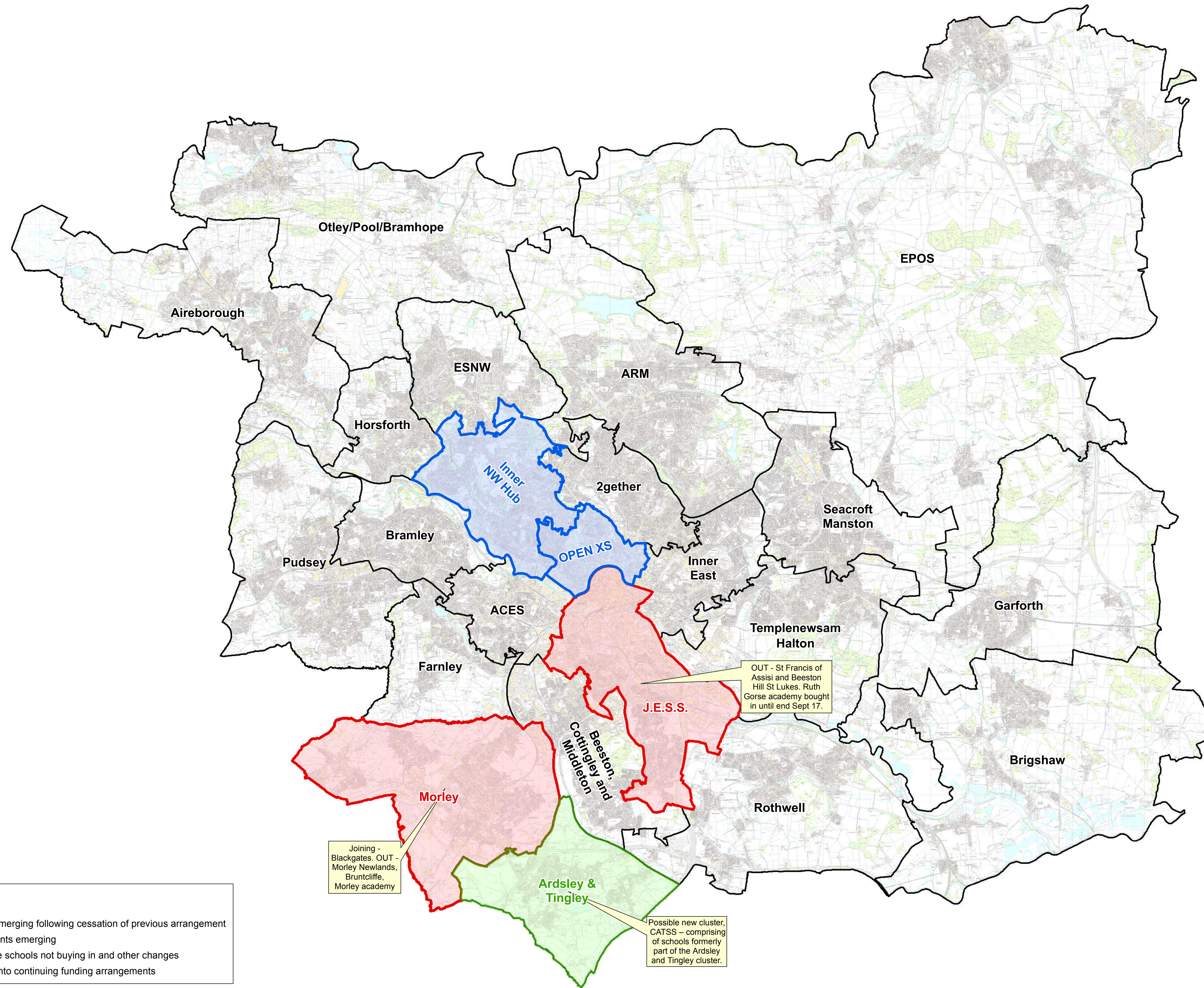
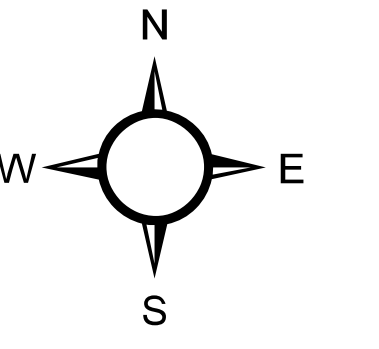


Current cluster arrangements and proposed changes



Legend

- New partnership arrangements emerging following cessation of previous arrangement
- Possible new clusters arrangements emerging
- Clusters continuing but with some schools not buying in and other changes
- Clusters with all schools bought into continuing funding arrangements

Joining - Blackgates. OUT - Morley Newlands, Bruntcliffe, Morley academy

OUT - St Francis of Assisi and Beeston Hill St Lukes. Ruth Gorse academy bought in until end Sept 17.

Possible new cluster, CATSS - comprising of schools formerly part of the Ardsley and Tingley cluster.



(c) Crown Copyright and database right 2016 Ordnance Survey LA100019567
 This map produced by the Children's Performance Service, Children's Services, Leeds City Council.
 For further information, please call 0113 3785 530

L:\PMIT\School Org\Requests\2017\20170918 - DL - Map - Cluster data for scrutiny



Notes:
 Schools at September 2017
 Clusters at September 2017